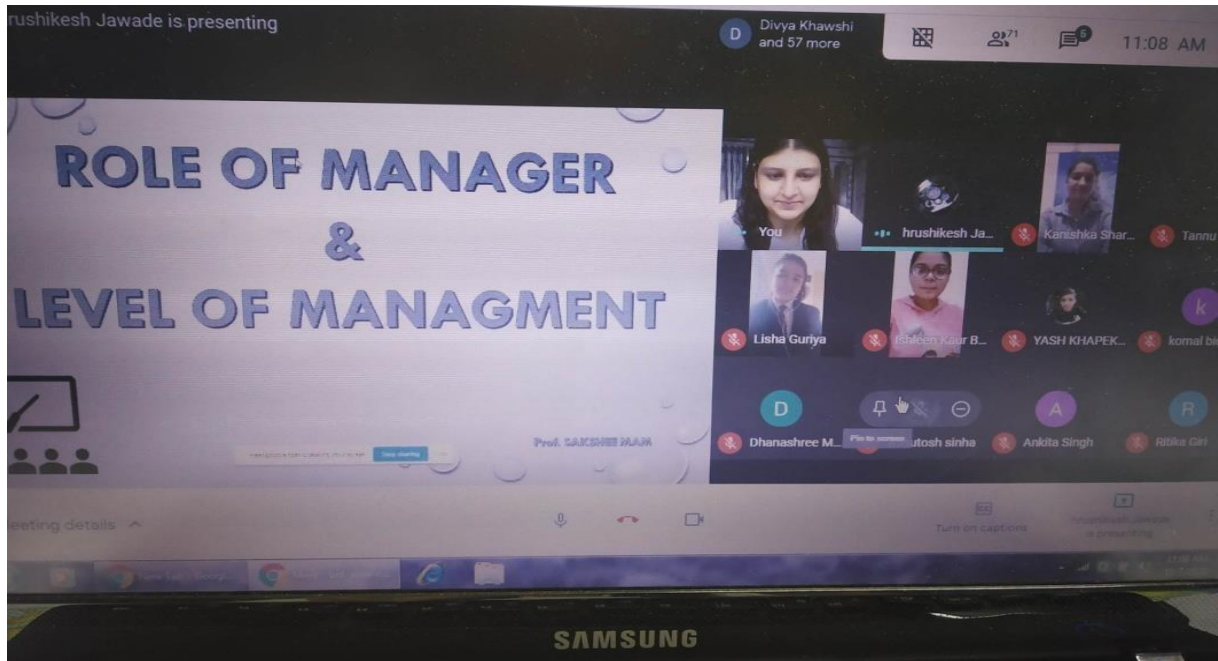


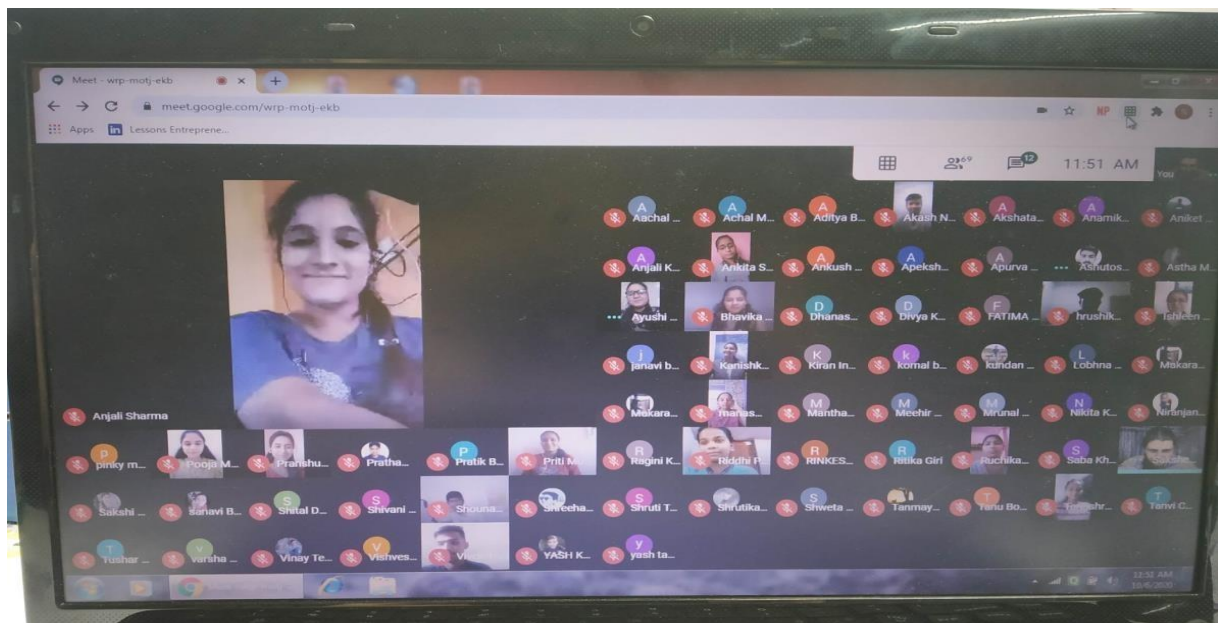
B.Com (Hon. and F & A/C) Department

Representative Photos, Screenshot and Link of Online classes for the session 2020-21

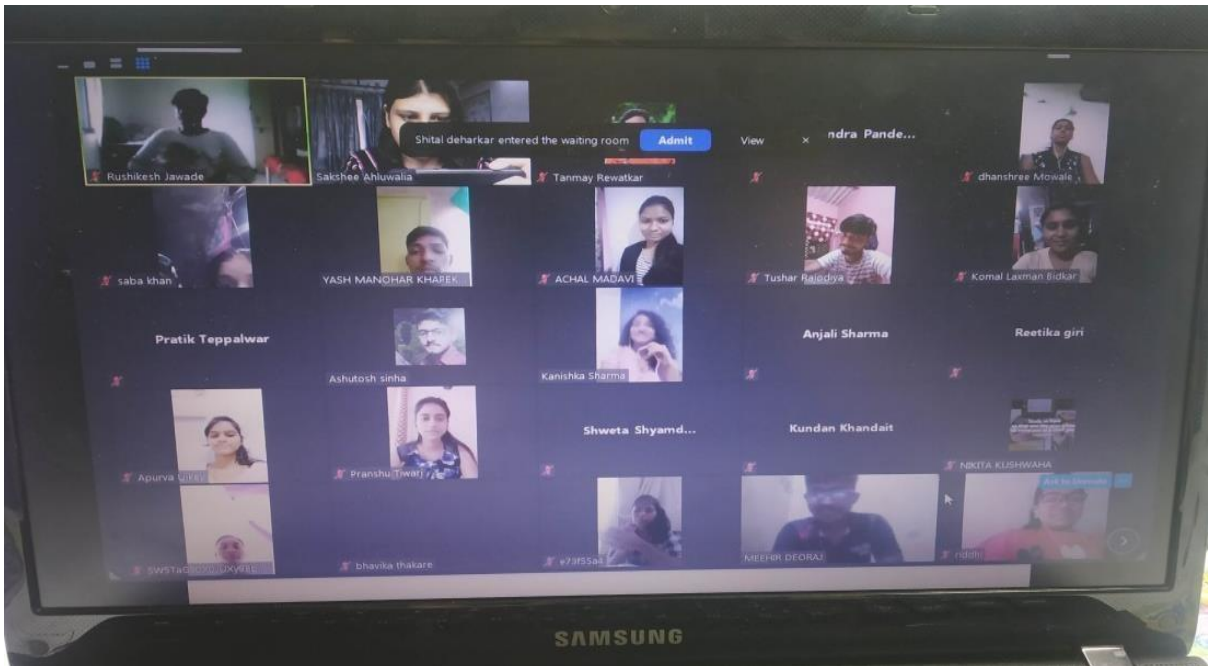
1) Prof. Sakshi Aluwalia



Presentations on Start up ideas by students – Prof. Sakshee Ahluwalia

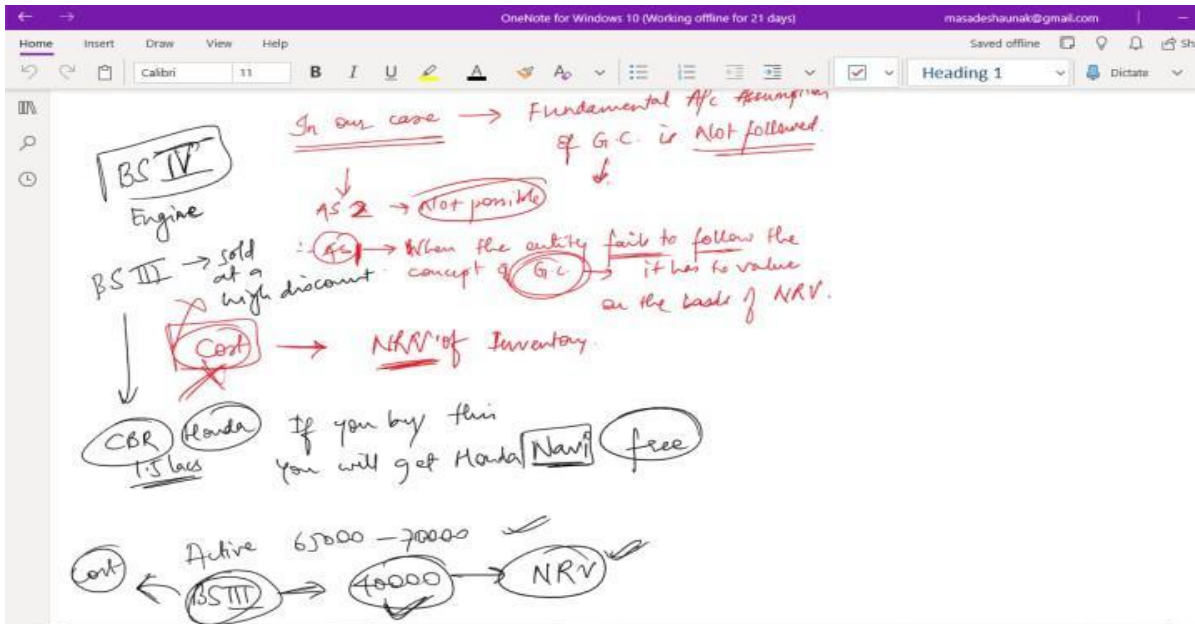


Quiz on Management topics – Prof. Sakshee Ahluwalia



Presentations and discussions on Formal etiquettes – Prof. Sakshee Ahluwalia

2) Prof. Shunak Masade



Discussion on "Ban on BS-3 engines"

- Prof. Shaunak Masade

OneNote for Windows 10 (Working offline for 21 days) masadeshaunak@gmail.com

Home Insert Draw View Help

Calibri Light 11 B I U A A

Heading 1

Cost of main product = Total Joint cost of main product by product (-) NKV of by product

Joint cost → Separately identifiable 32:35 ✓
 First production 400/kg ✓
 400:450
 8:9 ✓
 400/kg ✓
 Joint cost 1000
 Juice + Molasses
 Cost of main product = Joint cost - NKV.
 $1000 - 100 = 900$
 $700 + 20 + 30 = 950$
 However ✓ AS-2 ✓

Case study "Process Costing of a Sugar & Jaggery"

- Prof. Shaunak Masade

OneNote for Windows 10 (Working offline for 21 days) masadeshaunak@gmail.com

Home Insert Draw View Help

Calibri 11 B I U A A

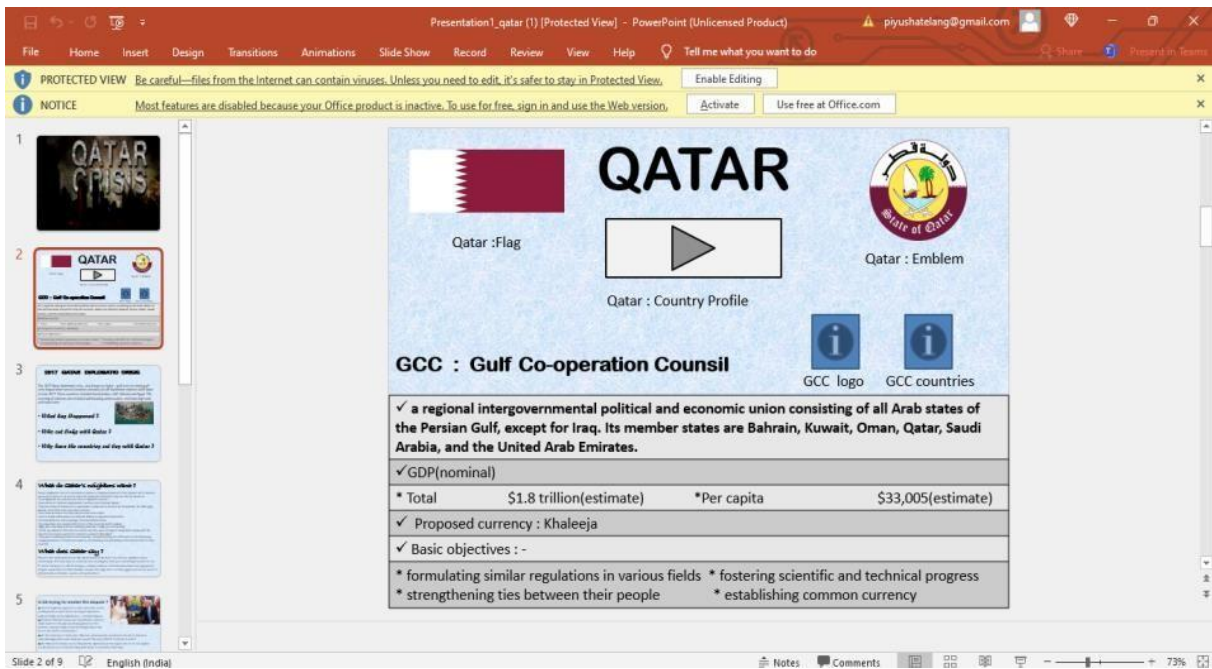
Heading 1

Tatas → Automobiles → Tata motors ✓
 Jaguar ✓
 Range Rover ✓ } (Premium)
 20,00,000 ✓
 10,00,000 ✓
 10,00,000 ✓
 50,00,000 ✓
 India ✓
 Dubai ✓
 US ✓
 UK ✓
 International.
 50,00,000 ✓
 Tatas ✓
 CFS ✓
 AS 11 ✓
 Showroom (Asset)
 Vehicles (Inventory)
 Computer Asset
 Patent
 Reward
 B/S
 Assets
 India
 Dubai
 US
 UK
 Pakistan
 Exp
 Profit
 Income
 Loss

Case study "Operations of Business Segment"

- Prof. Shaunak Masade

3) Dr. Piyusha Telang



Discussions on Financial Crisis 2007-08 and its impact on India

– Prof. Piyusha Telang

